

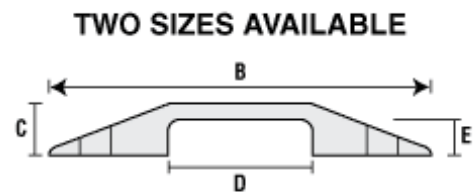
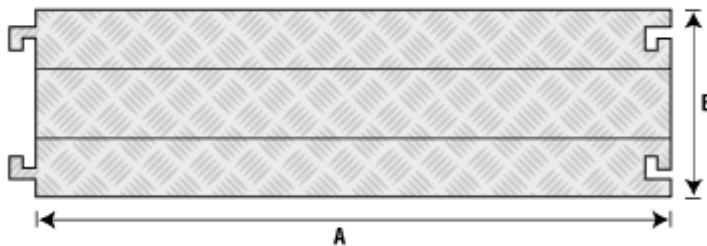
# 1 Channel Drop Over Cable Protectors with L-shaped connectors

## Ideal for public, commercial and industrial areas

FastLane Drop Over Protectors are made from durable polyurethane and feature heavy duty "L" shape connectors for easily attaching additional protectors as required. Patented 5-bar tread plate surface provides maximum traction for pedestrian traffic. These low profile protectors are compact for easy setup, disassembly, and storage. Optional Anti-Slip Rubber Pad Kit and/or Optional Carpet Kit with VELCRO® Brand Fasteners also available for added traction.

## Features

- Large size protects cables and cords up to 1 inch in diameter.
- Small size protects cables and cords up to 0.5 inch in diameter.
- For lightweight vehicles and pedestrian traffic.
- All weather polyurethane construction for moderate load capacity.
- Patented 5-bar tread surface provides maximum traction.
- Heavy duty L-shaped connector interlocks modular sections.
- Increase traction with optional Carpet Kit with VELCRO® Brand Fasteners and/or anti-slip rubber pads for smooth surfaces.
- Lightweight, modular design for easy setup, disassembly, and storage.
- Safety warning symbols moulded into protector surface.



## Specification Data

Material	<b>Polyurethane (UV stabilized)</b>
Operating Temp	<b>40°F to 120°F (-40°C to 48°C)</b>
Hinge Pin Material	<b>Reinforced fibreglass</b>

## Load Capacity Per Tyre/Axle

<b>1 Channel</b>	<b>Max Load at 70°F (21°C)</b>
Per Tyre	<b>1,050lbs (476kg)</b>
Per Axle	<b>2,100lbs (952kg)</b>

## Warnings

Symbols Moulded into Lid

Model	Description & Colour	A Length	B Width	C Height	D Channel Width	E Channel Height	F Weight
<b>FL1X1.5-O</b>	<b>Drop Over Protector 1 Channel (1.5 x 0.5inch) Orange</b>	<b>36inch (914.4mm)</b>	<b>5.25inch (133mm)</b>	<b>0.75inch (19mm)</b>	<b>1.5inch (38mm)</b>	<b>0.5inch (12.7mm)</b>	<b>3lbs (1.4kg)</b>
<b>FL1X1.5-B</b>	<b>Drop Over Protector 1 Channel (1.5 x 0.5inch) Black</b>	<b>36inch (914.4mm)</b>	<b>5.25inch (133mm)</b>	<b>0.75inch (19mm)</b>	<b>1.5inch (38mm)</b>	<b>0.5inch (12.7mm)</b>	<b>3lbs (1.4kg)</b>

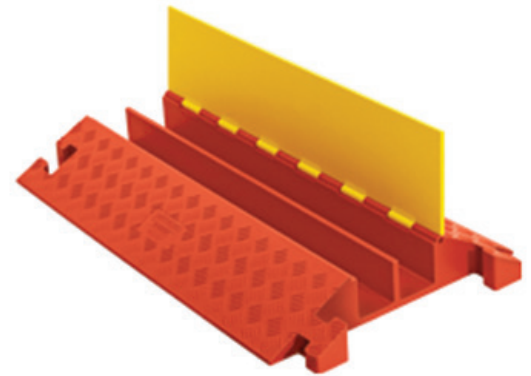
## Extra Heavy Duty 2 Channel Cable Protectors with T-shaped Connectors

### Ideal for public, commercial, heavy trucks and forklifts in industrial areas

Protect valuable electrical cables, cords and hose lines from damage and abuse while ensuring a method of safe passage for vehicles and pedestrian traffic. Ideal for heavy trucks and forklifts in industrial environments, such as construction sites, where extra heavy duty cable protection is required due to constant heavy truck and vehicle traffic. We also offer ADA compliant cable covers and bridges to fit these cable protectors.

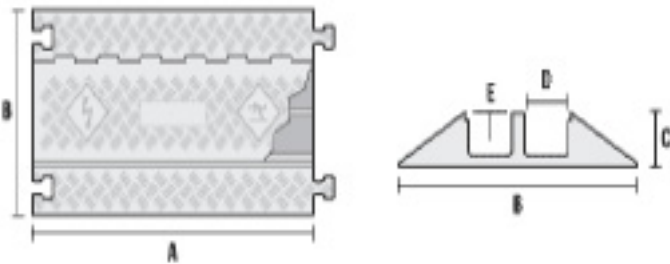
#### Features

- **LOAD CAPACITY: 10,880 lbs/tyre (21,760 lbs/axle).**
- **Protects cables and hose lines up to 3.25 in. in diameter.**
- **All weather polyurethane construction with heavy load capacity.**
- **Hinged lid makes placing and removing cables and hose lines easy.**
- **Patented 5-bar tread surface provides maximum traction.**
- **Heavy duty T-shaped connector interlocks modular sections.**
- **Lightweight and easy to transport, setup, disassemble and store.**
- **Carrying handle is conveniently recessed on underside of protector.**
- **Safety warning symbols moulded into lid surface.**



2 Channel Ramp

### Extra Heavy Duty 2 Channel Ramp



#### Specification Data

Material	<b>Polyurethane (UV stabilized)</b>
Operating Temp	<b>40°F to 120°F (-40°C to 48°C)</b>
Hinge Pin Material	<b>Reinforced fibreglass</b>
Safety Symbols	<b>Per ANSI. Z535.3-1991</b>

#### Load Capacity Per Tyre/Axle

<b>2 Channels</b>	<b>Max Load at 70°F (21°C)</b>
Per Tyre	<b>10,880lbs (6,446kg)</b>
Per Axle	<b>21,760lbs (9,870kg)</b>

#### Warnings

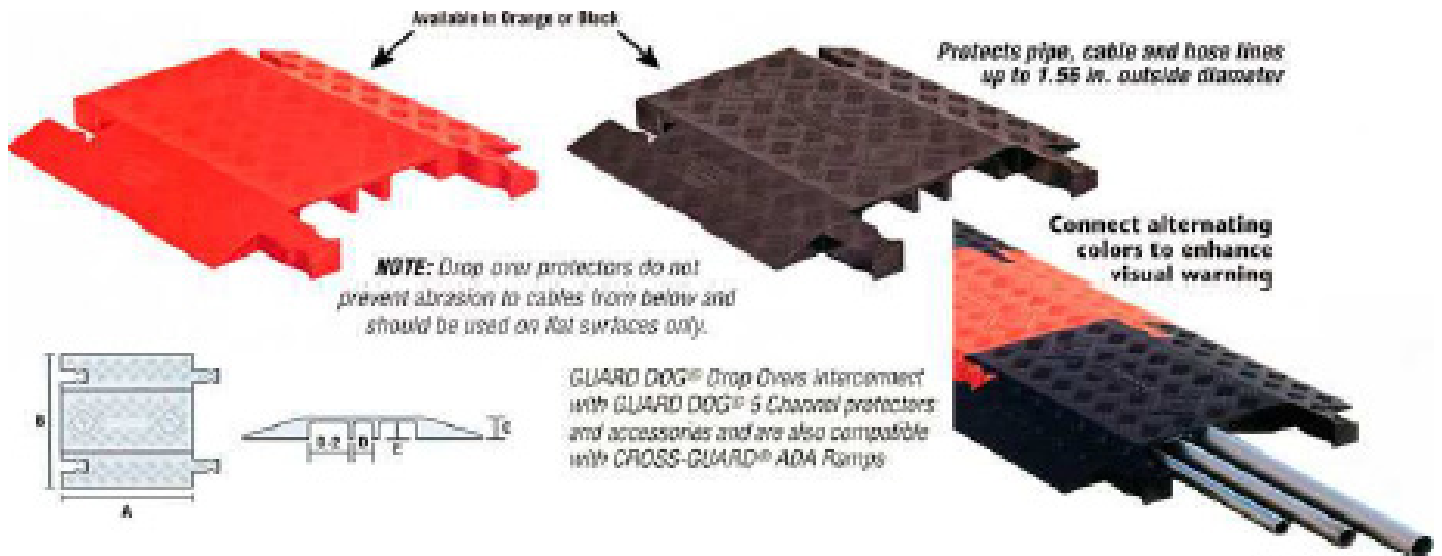
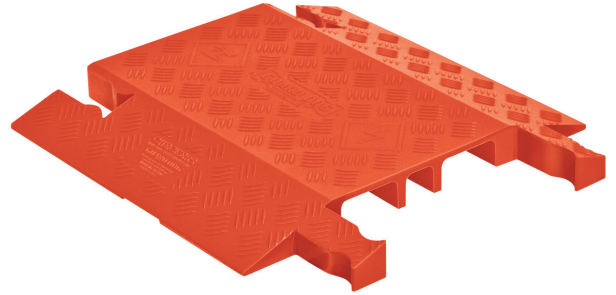
Symbols Moulded into Lid

Model	Description & Colour	A Length	B Width	C Height	D Channel Width	E Channel Height	F Weight
<b>CP2X325 -Y/O</b>	<b>2-Channel Protector Yellow Lid Orange Ramp</b>	<b>36inch (914.4mm)</b>	<b>22inch (558.8mm)</b>	<b>4.13inch (101.6mm)</b>	<b>3.25inch (86.2mm)</b>	<b>3.25inch (82.6mm)</b>	<b>303lbs (15kg)</b>

## 3 Channel Guard Dog General Purpose Drop Over Ramp

### Features

- Protects cables and hoses up to 33.65 mm (1.325") outside diameter.
- Dog-Bone connectors to extend to any de-sired length.
- Fast install with drop-over design.
- All weather polyurethane construction.
- Patented 5-bar tread surface for maximum traction.
- Connects to the standard Guard Dog 5 Channel ramps.



### Load Capacity Per Tyre/Axle

3 Channel Drop Over	Max Load at 70°F (21°C)
Per Tyre	10,500lbs (4,763kg)
Per Axle	21,000lbs (9,526kg)

Model	Description & Colour	A Length	B Width	C Height	D Channel Width	E Channel Height	F Weight
GD3-DO	3 Channel General Purpose Drop-Over Ramp Available in Red, Black or Yellow	18inch (457.2mm)	19.75inch (503.6mm)	1.87inch (47.6mm)	D2: 3.20inch (81.6mm) D1: 1.65inch (42.1mm)	1inch (25.4mm)	9lbs (4.2kg)

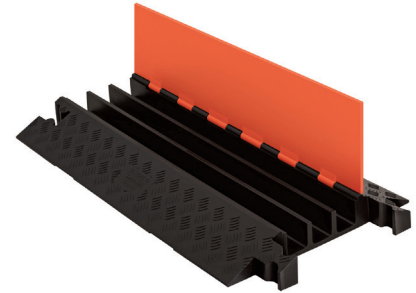
# Heavy Duty 3 Channel Cable Protectors with Dog-Bone Connectors

## Ideal for public, commercial and industrial areas

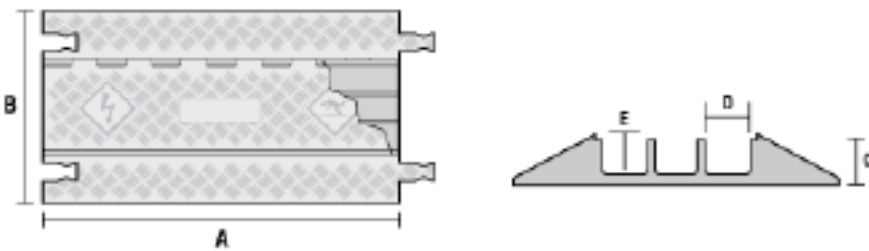
The fast and easy way to guard and protect valuable electrical cables and hose lines from damage and abuse while providing a method of safe crossing for constant vehicle and pedestrian traffic. Each cable/hose line is separated and organized in its own protective channel to ensure safety. Ideal for use in amusement parks, entertainment ven-ues, sporting events, and in most public, commercial, industrial, con-struction, and utility applications.

## Features

- **LOAD CAPACITY: 14,210 lbs/tyre (28,420 lbs/axle).**
- **Protects cables and hose lines up to 2.25 in. in diameter.**
- **All weather polyurethane construction with heavy load capacity.**
- **Hinged lid makes placing and removing cables and hose lines easy.**
- **Patented 5-bar tread surface provides maximum traction.**
- **Heavy duty Dog-Bone connector interlocks modular sections.**
- **Lightweight and easy to transport, setup, disassemble and store.**
- **Carrying handle is conveniently recessed on underside of pro-tector.**
- **Safety warning symbols moulded into lid surface.**



3 Channel Ramp



## Specification Data

Material	<b>Polyurethane (UV stabilized)</b>
Operating Temp	<b>40°F to 120°F (-40°C to 48°C)</b>
Hinge Pin Material	<b>Reinforced fibreglass</b>
Safety Symbols	<b>Per ANSI. Z535.3-1991</b>

## Load Capacity Per Tyre/Axle

<b>3 Channels</b>	<b>Max Load at 70°F (21°C)</b>
Per Tyre	<b>14,210lbs (6,446kg)</b>
Per Axle	<b>28,420lbs (12,892kg)</b>

## Warnings

Symbols Moulded into Lid

Model	Description & Colour	A Length	B Width	C Height	D Chanel Width	E Chanel Height	F Weight
<b>GD3X225 -0/B</b>	<b>3 Channel Protector Orange Lid/Black Ramp</b>	<b>36inch (914.4mm)</b>	<b>20inch (510mm)</b>	<b>3inch (76.5mm)</b>	<b>2.25inch (58mm)</b>	<b>2.25inch (58mm)</b>	<b>30lbs (13.6kg)</b>